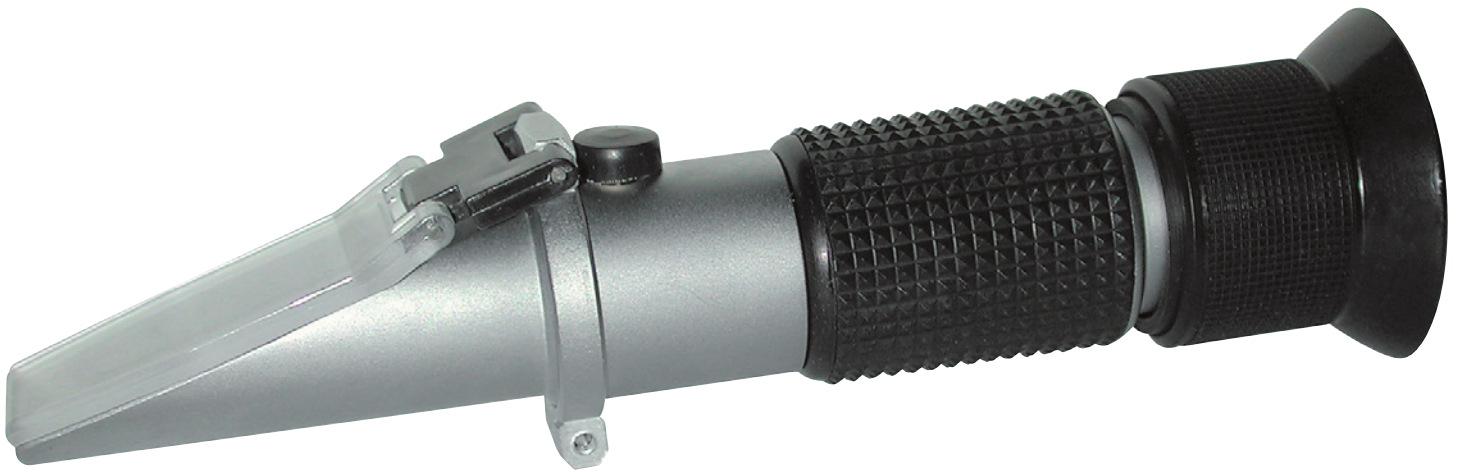


TECHNICAL DATA



Features

- Measures the concentration of sugar in fruit juice (0 to 32% BRIX)
- Easy to operate with simple to read scales
- Requires only 2 or 3 drops of sample
- Prism and lens with a simple focus adjustment provides repeatable results
- Calibrated to sucrose content contained in 100g of cane sugar
- Includes cover plate, calibration screwdriver, cleaning cloth, solution/sample applicator and hard carrying case

Specifications

Measuring Range:	0 to 32% (BRIX)
Accuracy:	±0.2%
Resolution:	0.2
Dimensions:	6.5 x 1 x 1.5" (170 x 30 x 40 mm)
Weight:	7oz (200g)

Model	Description
R9500	BRIX Refractometer, 0 to 32%
RPDPA1	Replacement Refractometer Lens Cover
R9500-NIST	BRIX Refractometer, 0 to 32% & NIST