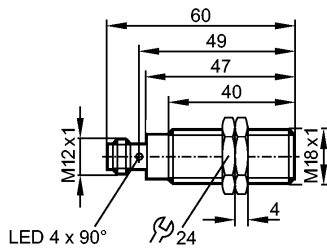


OGE300

OGE-DPKG/US100

Photoelectric sensors



Made in Germany



Product characteristics

Through-beam sensor
Threaded type
M18 x 1
Connector
Receiver
Sensing range 20m

Electrical data

Electrical design	DC PNP
Operating voltage [V]	10...36 DC
Current consumption [mA]	10
Type of light	Red light 624 nm
Protection class	II
Reverse polarity protection	yes

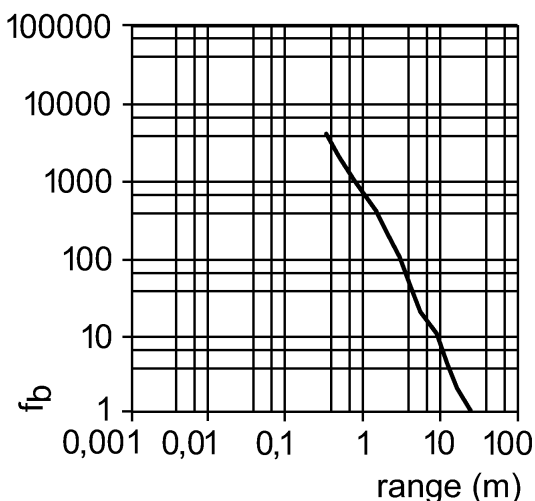
Outputs

Output function	dark-on mode
Voltage drop [V]	< 2.5
Current rating [mA]	200 (...60 °C) / 150 (...80 °C)
Short-circuit protection	pulsed
Overload protection	yes
Switching frequency [Hz]	1000

Range

Sensing range [m]	20
-------------------	----

Excess gain graphs



OGE300

OGE-DPKG/US100

Photoelectric sensors

Environment

Ambient temperature	[°C]	-25...80
Protection		IP 67 / IP 68 / IP 69K

Tests / approvals

EMC		EN 60947-5-2
MTTF	[Years]	1112

Mechanical data

Housing materials		housing: stainless steel 316L / 1.4404; sealing: EPDM
Lens material		PMMA
Weight	[kg]	0.057

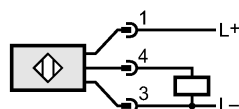
Displays / operating elements

Output status indication	LED	yellow
--------------------------	-----	--------

Electrical connection

Connection		M12 connector
------------	--	---------------

Wiring



Accessories

Accessories (included)		2 lock nuts
------------------------	--	-------------

Remarks

Remarks		cULus - Class 2 source required
Pack quantity	[piece]	1