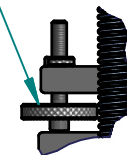


*) MEASURING FORCE IF THE GAUGE IS HELD
IN MEASURING POSITION AS SHOWN ABOVE

B (1 : 2)

ADJUSTABLE STOPPER



subject to technical alterations

type: **Modul 2**
range: 0 - 200 mm
range of indication: 0 - 201 mm
digital step: 0,2 mm
scale interval: -
measuring force: 0,8 - 1,5 N *)
weight: 1,3 kg

acceptable deviations
VDI/VDE/DGQ 2618 Bl. 12.1/13.1)
max. permissible
errors "G": 0,4 mm
repeatability "r": 0,2 mm
reference temperature: 20° C
operation temperature: 10° C - 30° C
storage temperature: -10° C - 50° C

scale: 1:5 (1:2)
drawing-nr.: DAB-C16200_KR_e
date of issue: 30.03.2015
name: J.Röder
revision status: 2129
revision date: 12.01.2016 (MHe)