



Compliance with relevant ASTM and ISO Standards as well as Industry Engineering specifications

Labino AB LED UV Lights	Built in White Light LED	UV Intensity at 38 cm (15") (µW/cm ²)	COMPLIES WITH ASTM E3022-2018 Standard	COMPLIES WITH Rolls-Royce RRES90061 Specification	COMPLIES WITH Airbus AITM6-1001 Testing Method	COMPLIES WITH Pratt & Whitney Requirements	COMPLIES WITH The Boeing Co Requirements	COMPLIES WITH ISO 3059-12 Standard	COMPLIES WITH USAF Requirements
GX SERIES – OVERHEAD LIGHT									
GX Orion REMOTE	✓	1 500-7 000	✓	-	-	-	-	✓	-
GX Orion UV & WH	✓	≈ 7 000	✓	✓	✓	✓	-	✓	-
GX Orion UV	-	≈ 4 500	✓	✓	✓	✓	✓	✓	✓
BB 2.0 SERIES – HANDHELD LIGHT									
BB 2.0 Helios	-	≈ 9 000	✓	✓	✓	✓	-	✓	✓
BB 2.0 Ikaros	-	≈ 4 000	✓	✓	✓	✓	✓	✓	✓
BB 2.0 Artemis	-	≈ 22 000	✓	-	-	-	-	✓	-
MB 3.0 SERIES – HANDHELD LIGHT									
Hercules Ex	-	≈ 4 000	✓	✓	✓	✓	✓	✓	✓
MB 3.0 Zeus	✓	≈ 4 500	✓	✓	✓	✓	✓	✓	-
MB 3.0 Zeus with Athena	✓	≈ 4 500	✓	✓	✓	✓	✓	✓	-
MB 3.0 Hermes	-	≈ 4 500	✓	✓	✓	✓	✓	✓	✓
MB 3.0 Hermes with Athena	-	≈ 4 500	✓	✓	✓	✓	✓	✓	✓
MB 3.0 Selene	✓	≈ 9 000	✓	✓	✓	✓	-	✓	-
MB 3.0 Selene with Athena	✓	≈ 9 000	✓	✓	✓	✓	-	✓	-
MB 3.0 Atlas	-	≈ 9 000	✓	✓	✓	✓	-	✓	✓
MB 3.0 Atlas with Athena	-	≈ 9 000	✓	✓	✓	✓	-	✓	✓
MB 2.0 SERIES – FLASHLIGHT / HEADLIGHT									
UVG3 2.0 Spotlight	-	≈ 80 000	✓	-	-	-	-	✓	-
UVG3 2.0 Midlight	-	≈ 9 000	✓	✓	✓	✓	-	✓	✓
UVG3 2.0 Floodlight	-	≈ 4 000	✓	✓	✓	✓	✓	✓	✓
UVG5 2.0 Spotlight	optional	≈ 80 000	✓	-	-	-	-	✓	-
UVG5 2.0 Midlight	optional	≈ 9 000	✓	✓	✓	✓	-	✓	✓
UVG5 2.0 Floodlight	-	≈ 4 000	✓	✓	✓	✓	✓	✓	✓

PLEASE NOTE: The above models are in compliance with the above ASTM and ISO standards as well as industry specifications as indicated on the table above irrespective of the power source (Battery or Mains).



GX ORION

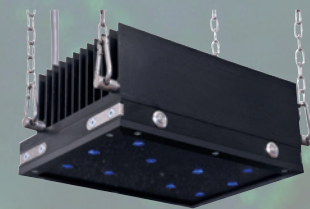
MODULAR OVERHEAD UV INSPECTION LIGHT

PLC INTERFACE
IP68 WATERPROOF

3 YEAR WARRANTY



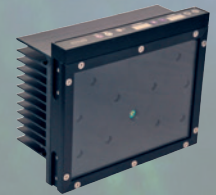
**OPTION 1 (PIN: L3100):
REMOTE
CONTROLLED**
Allows you to switch on/off the UV and white light, change the intensity and set up the timer from a distance



**OPTION 2 (PIN: L3101):
UV AND WHITE LIGHT ONLY**



**OPTION 3 (PIN: L3102):
UV ONLY**



**GLASS SURFACE PROTECTS
SENSITIVE COMPONENTS**

GX Orion REMOTE
1500-7000 $\mu\text{W}/\text{cm}^2$

GX Orion UV & WH
 $\approx 7\ 000\ \mu\text{W}/\text{cm}^2$

GX Orion UV
 $\approx 4\ 500\ \mu\text{W}/\text{cm}^2$

COMPLIES WITH
ASTM E3022-2015
Standard

COMPLIES WITH
ASTM E3022-2015
Standard

COMPLIES WITH
ASTM E3022-2015
Standard

COMPLIES WITH
Rolls-Royce RRES 90061
Specification

COMPLIES WITH
Airbus AITM6-1001
Testing Method

GX SERIES – OVERHEAD LIGHT

TESTED TO COMPLY WITH

	Initial UV Intensity* ($\mu\text{w}/\text{cm}^2$)	ASTM E3022-15 Standard	ROLLS-ROYCE RRES 90061 Specification	AIRBUS AITM6-1001 Testing Method
GX Orion ^{REMOTE}	1 500 – 7 000	✓		
GX Orion ^{UV & WH}	≈ 7 000	✓		
GX Orion ^{UV}	≈ 4 500	✓	✓	✓

* At a distance of 38cm (15 inches)

- **WATERPROOF:** GX Orion is the only overhead UV system on the market that is certified with an ingress protection marking of IP68 Waterproof, making it an extremely useful tool for inspection areas with excessive liquids.
- **PLC INTERFACE:** All GX Orion units come with a PLC interface that can be used to monitor the UV light from a computerized panel.
- **MODULAR DESIGN:** Allows you to design the desired covered area by mounting together multiple units.
- **THREE DIFFERENT OPTIONS:** Choose from remote controlled with multiple UV intensities, UV on/off button only, and UV and visible light on/off buttons only.

THREE GX ORION ^{REMOTE} MOUNTED TOGETHER – SHORT SIDE TO SHORT SIDE



THREE GX ORION ^{REMOTE} MOUNTED TOGETHER – LONG SIDE TO LONG SIDE



THREE GX ORION ^{UV} MOUNTED TOGETHER – SHORT SIDE TO SHORT SIDE



THREE GX ORION ^{UV & WH} MOUNTED TOGETHER – SHORT SIDE TO SHORT SIDE



OPERATE VIA A FOOT PEDAL OR A POWER BUTTON



Can be used as an on/off switch for the UV light to activate the last used intensity and the last recorded timer setting.



MAKES IT BRIGHT