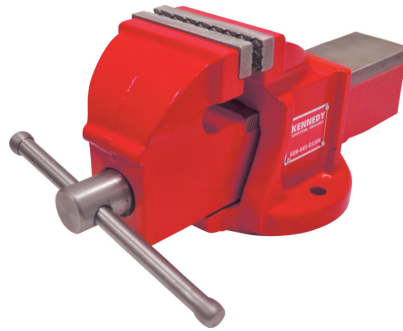


Kennedy 75mm ENGINEERS VICE

Manufactured from the highest quality castings with precision cut screw mechanisms and precision machined jaws. Suitable for workshop, automotive and engineering use.



Specifications	Details
Brand	Kennedy
Special Features	<input type="checkbox"/> Precision Vice
Overall Length	270 mm
Mounting Type	Bolt
Overall Width	115 mm
Jaw Material	Cast Iron
Jaw Thickness	10 mm
Throat Depth	50 mm
Overall Height	120 mm
Jaw Dimensions	75mm x 10mm x 16mm mm
Jaw Height	16 mm
Jaw Width	75 mm
Jaw Opening	100 mm
Base Type	Fixed
Compatible Vice Jaw Width	75 mm

Specifications	Details
Overall Dimensions	270mm x 115mm x 120mm mm
Vice Type	Engineers Vice
Model Number	KECV75GTS
Overall Material	Cast Iron

