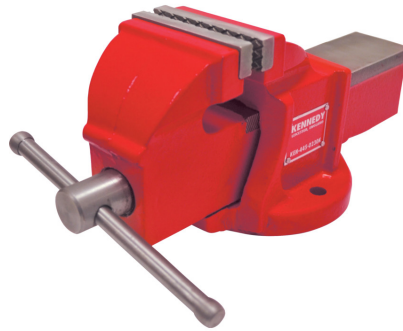


Kennedy 200mm ENGINEERS VICE

Manufactured from the highest quality castings with precision cut screw mechanisms and precision machined jaws. Suitable for workshop, automotive and engineering use.



Specifications	Details
Brand	Kennedy
Special Features	<input type="checkbox"/> Precision Vice
Mounting Type	Bolt
Jaw Material	Steel
Throat Depth	102 mm
Jaw Dimensions	200mm x 28mm mm
Jaw Height	28 mm
Jaw Width	200 mm
Jaw Opening	210 mm
Base Type	Fixed
Compatible Vice Jaw Width	200 mm
Vice Type	Engineers Vice
Model Number	KECV200GTS
Overall Material	Cast Iron