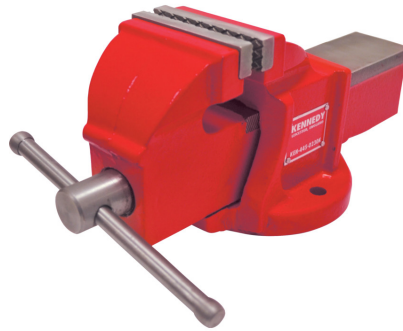


Kennedy 125mm ENGINEERS VICE

Manufactured from the highest quality castings with precision cut screw mechanisms and precision machined jaws. Suitable for workshop, automotive and engineering use.



Specifications	Details
Brand	Kennedy
Special Features	<input type="checkbox"/> Precision Vice
Overall Length	410 mm
Mounting Type	Bolt
Overall Width	160 mm
Jaw Material	Cast Iron
Jaw Thickness	12.5 mm
Throat Depth	70 mm
Overall Height	165 mm
Jaw Dimensions	125mm x 12.5mm x 21mm mm
Jaw Height	21 mm
Jaw Width	125 mm
Jaw Opening	170 mm
Base Type	Fixed
Compatible Vice Jaw Width	125 mm

Specifications	Details
Overall Dimensions	410mm x 160mm x 165mm mm
Vice Type	Engineers Vice
Model Number	KECV125GTS
Overall Material	Cast Iron

